

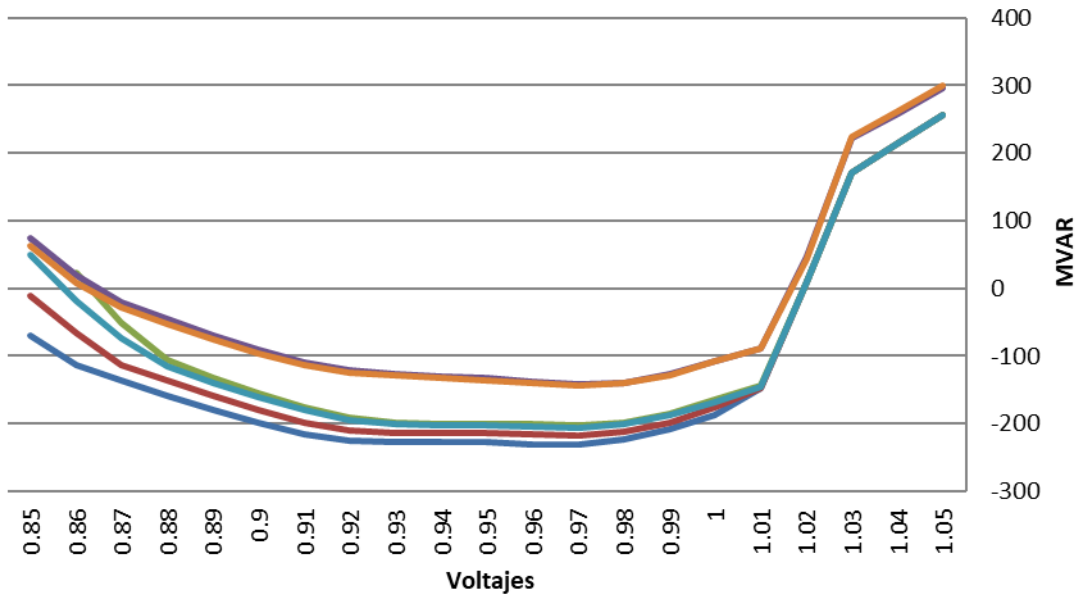
ANEXO 6

CURVAS QV ESCENARIO DE REFERENCIA
(CORTO PLAZO)

PESIN
2022

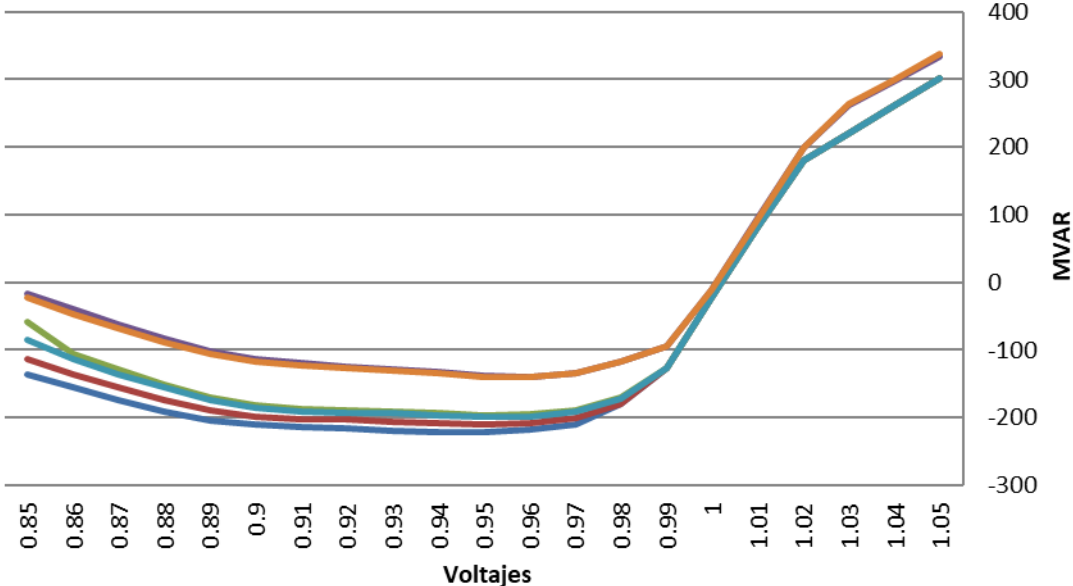
TOMO III

2022CA_ModMax_Lluv 6001



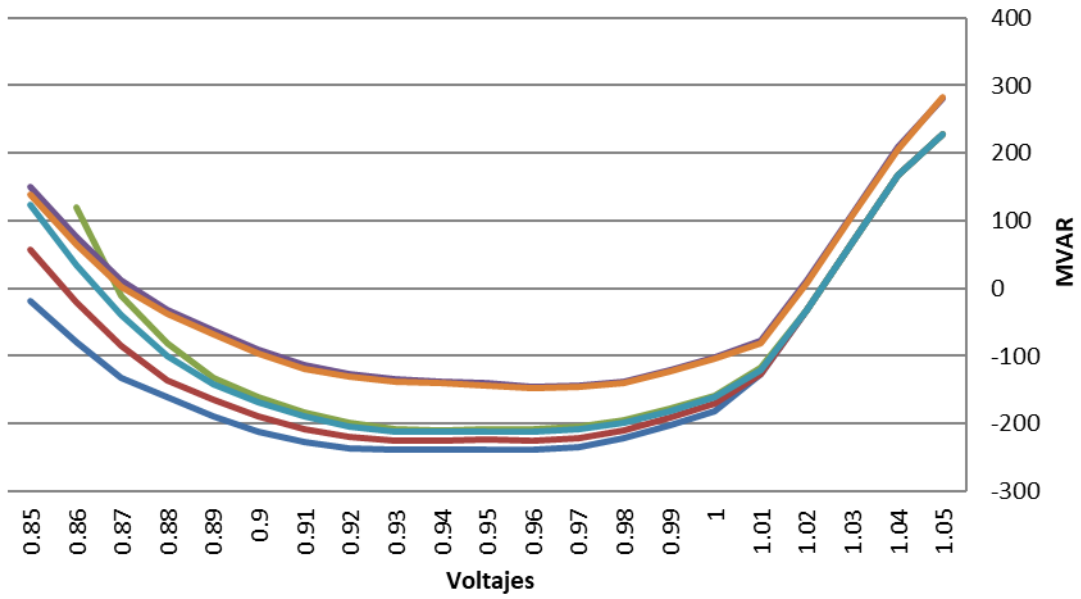
- BASE CASE
- MDN-BOQ3 230-9A
- VEL-DOM 230-25A
- ECO-BUR 230-12B
- VEL-GUA 230-16
- PAN2-ECO 230-13A

2022CA_ModMax_Lluv 6002



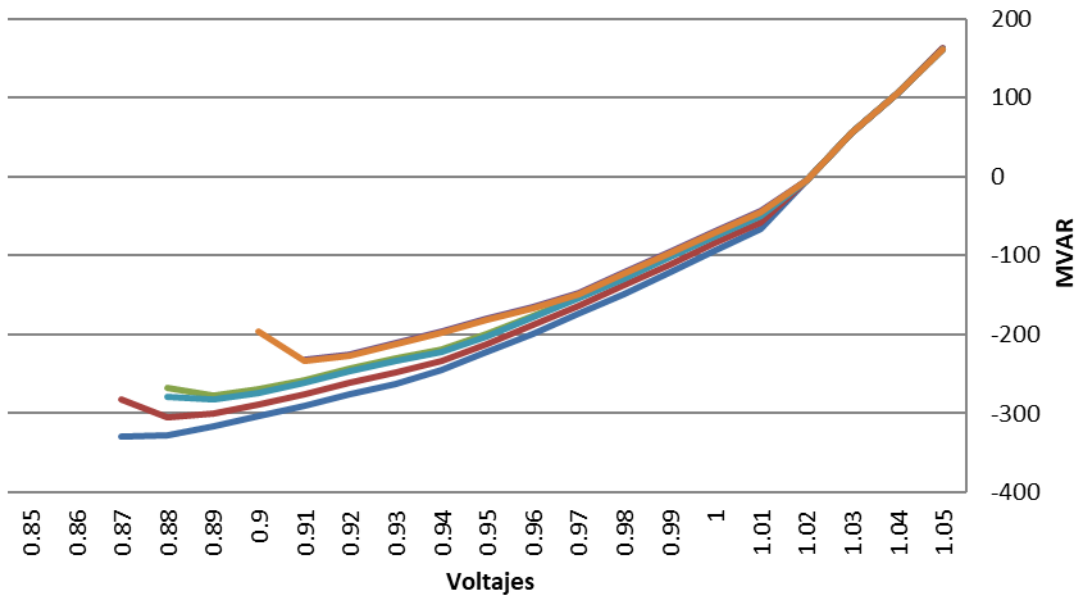
- BASE CASE
- MDN-BOQ3 230-9A
- VEL-DOM 230-25A
- ECO-BUR 230-12B
- VEL-GUA 230-16
- PAN2-ECO 230-13A

2022CA_ModMax_Lluv 6005



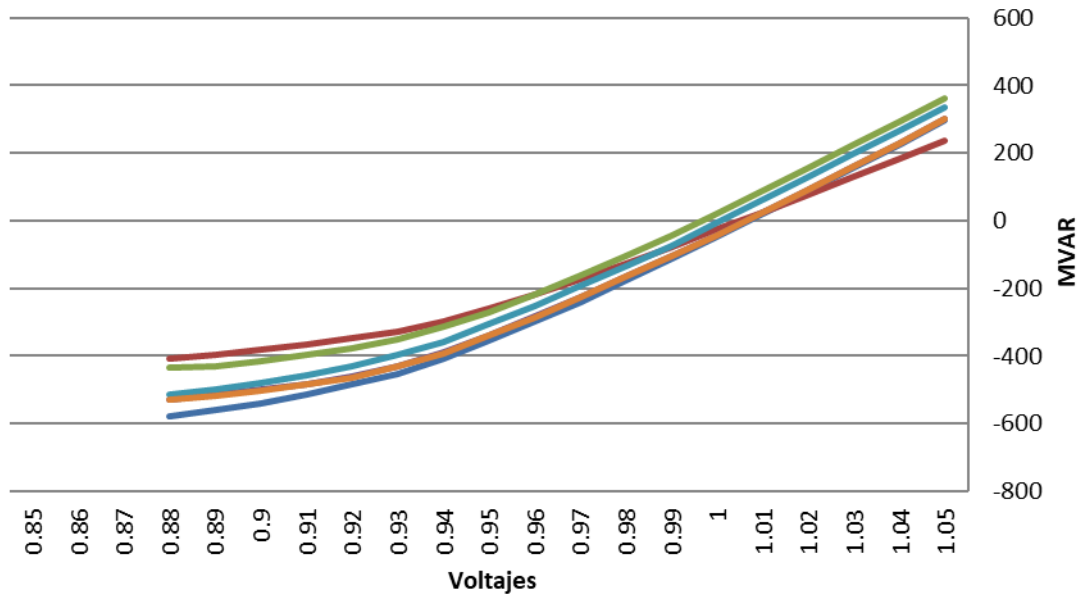
- BASE CASE
- MDN-BOQ3 230-9A
- VEL-DOM 230-25A
- ECO-BUR 230-12B
- VEL-GUA 230-16
- PAN2-ECO 230-13A

2022CA_ModMax_Lluv 6009



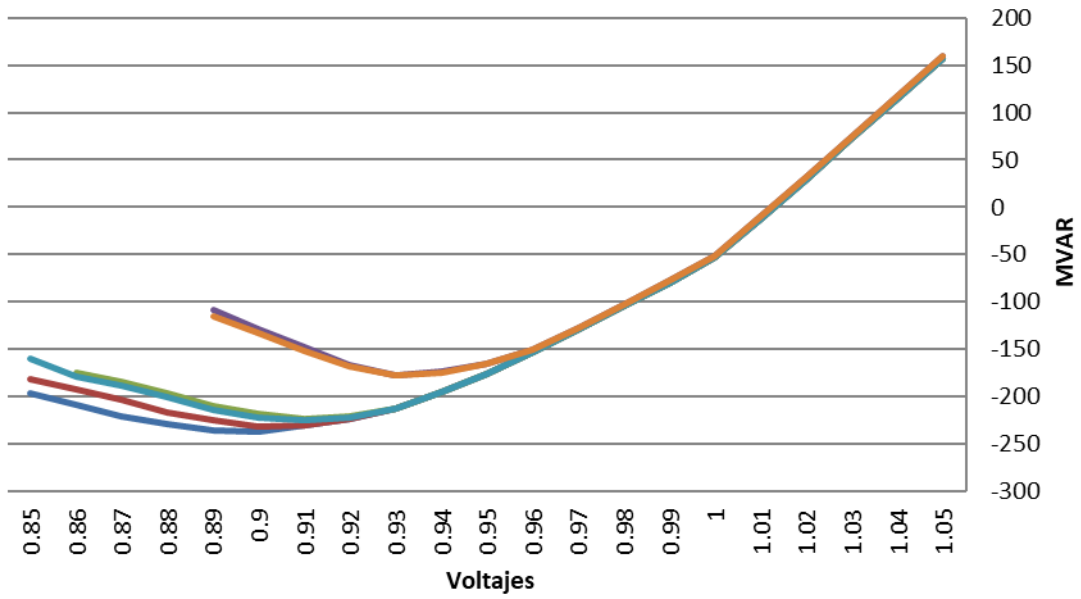
- BASE CASE
- MDN-BOQ3 230-9A
- VEL-DOM 230-25A
- ECO-BUR 230-12B
- VEL-GUA 230-16
- PAN2-ECO 230-13A

2022CA_ModMax_Lluv 6011



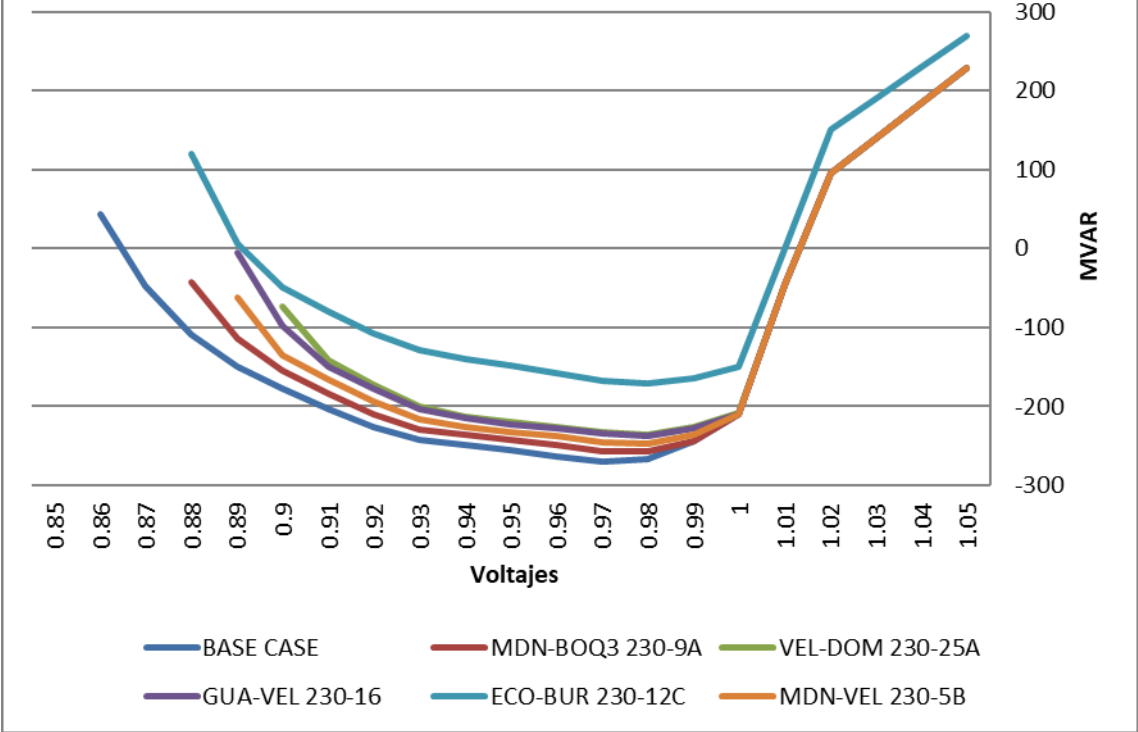
- BASE CASE
- MDN-BOQ3 230-9A
- VEL-DOM 230-25A
- ECO-BUR 230-12B
- VEL-GUA 230-16
- PAN2-ECO 230-13A

2022CA_ModMax_Lluv 6173

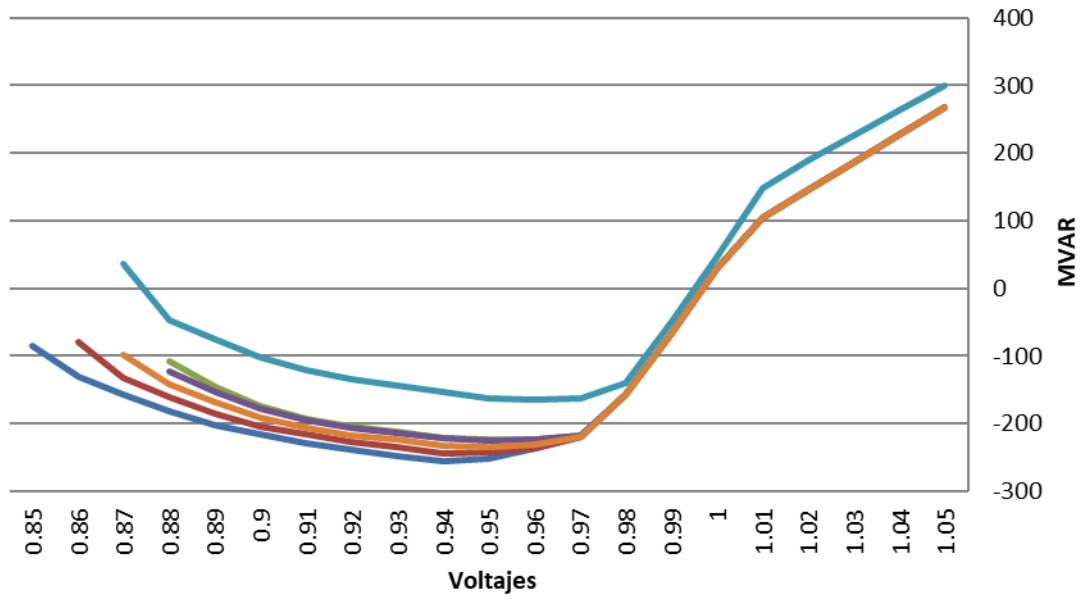


- BASE CASE
- MDN-BOQ3 230-9A
- VEL-DOM 230-25A
- ECO-BUR 230-12B
- VEL-GUA 230-16
- PAN2-ECO 230-13A

2023CA_ModMax_Lluv 6001

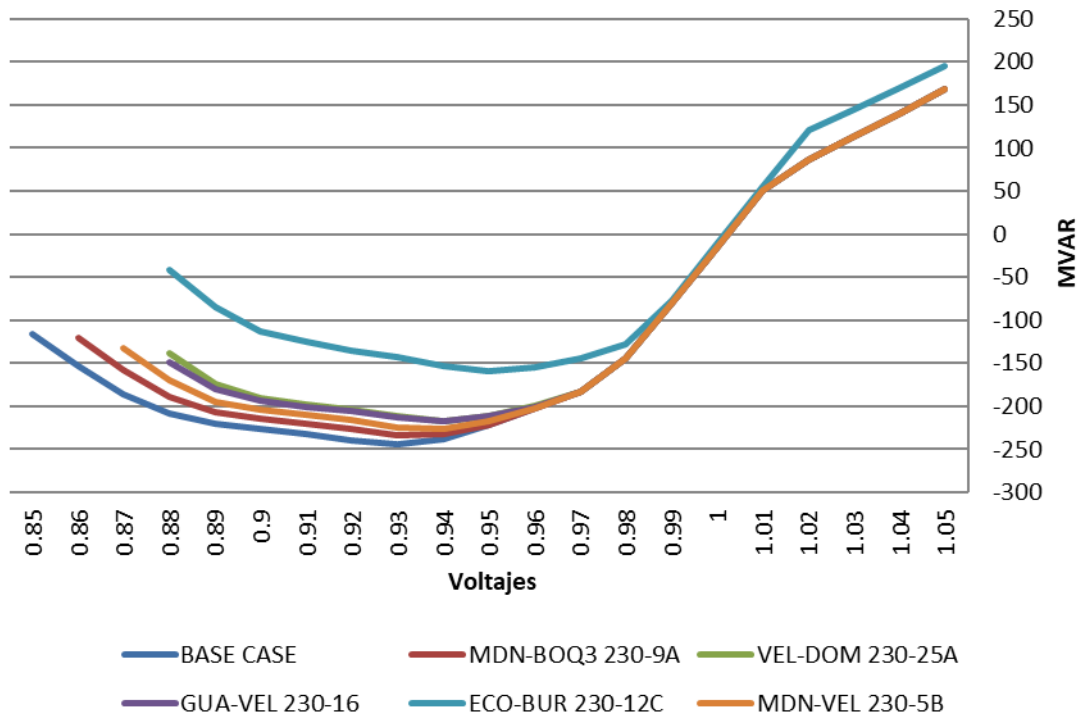


2023CA_ModMax_Lluv 6002

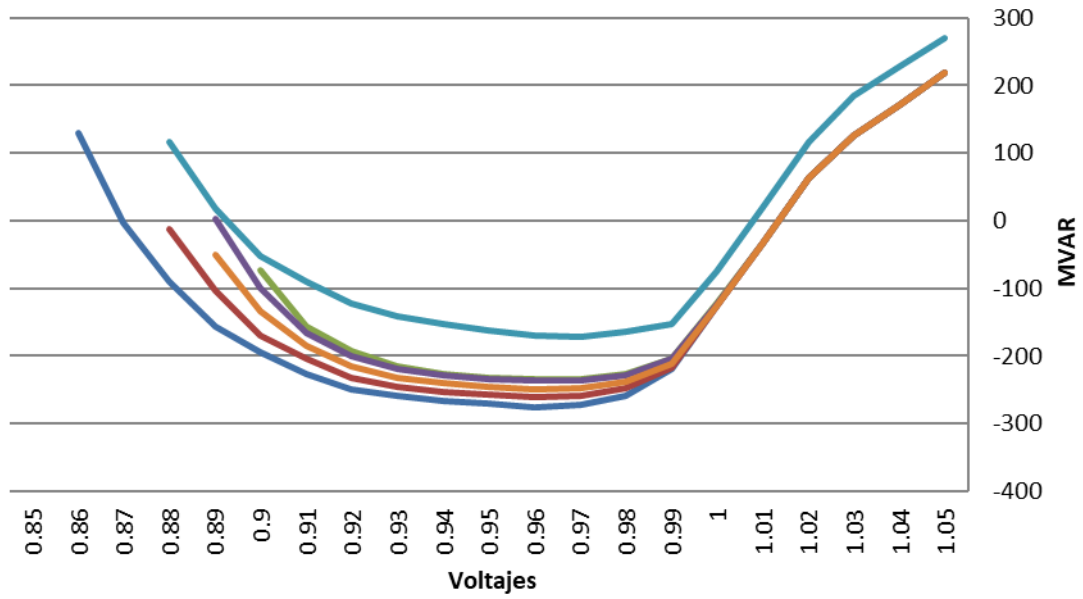


- BASE CASE
- MDN-BOQ3 230-9A
- VEL-DOM 230-25A
- GUA-VEL 230-16
- ECO-BUR 230-12C
- MDN-VEL 230-5B

2023CA_ModMax_Lluv 6004

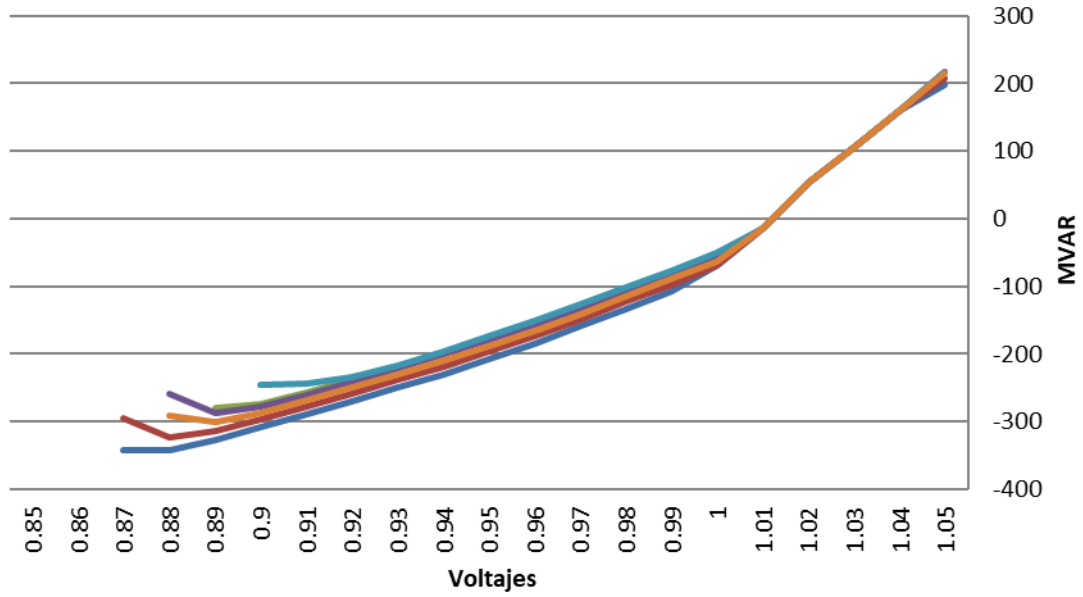


2023CA_ModMax_Lluv 6005



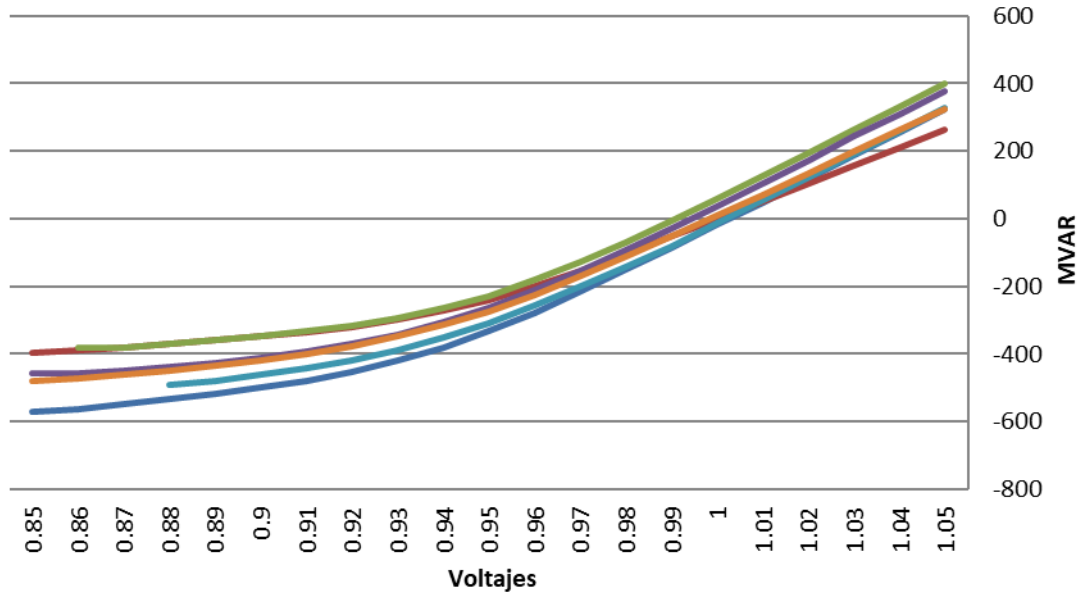
- BASE CASE
- MDN-BOQ3 230-9A
- VEL-DOM 230-25A
- GUA-VEL 230-16
- ECO-BUR 230-12C
- MDN-VEL 230-5B

2023CA_ModMax_Lluv 6009



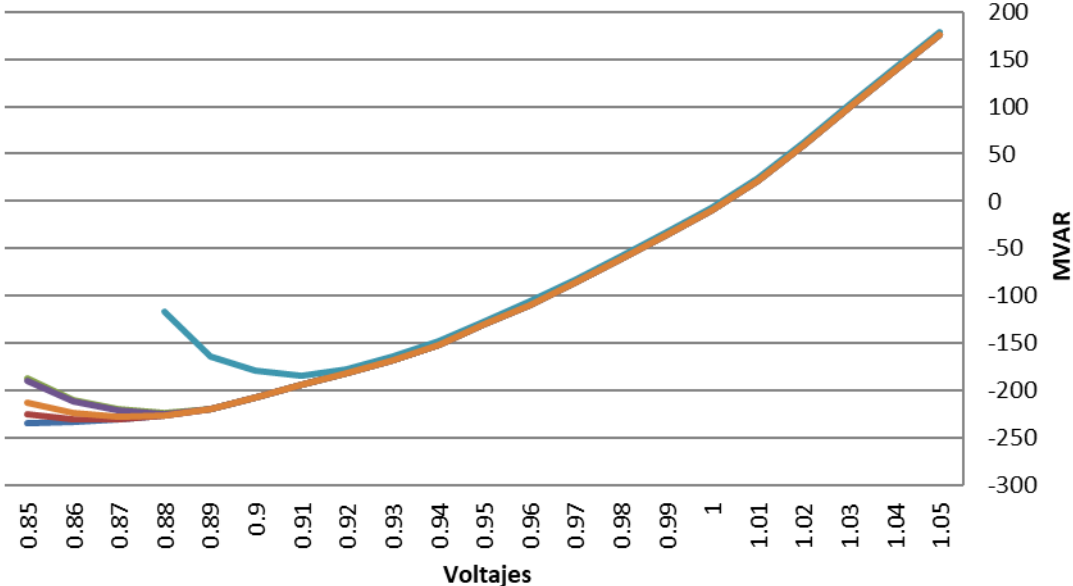
- BASE CASE
- MDN-BOQ3 230-9A
- VEL-DOM 230-25A
- GUA-VEL 230-16
- ECO-BUR 230-12C
- MDN-VEL 230-5B

2023CA_ModMax_Lluv 6011



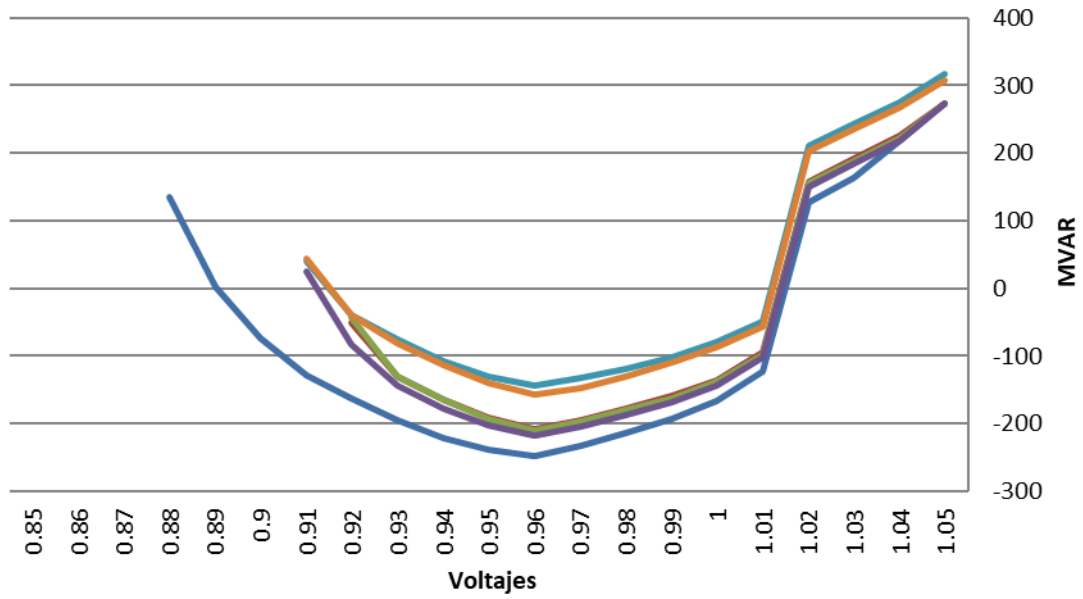
- BASE CASE
- MDN-BOQ3 230-9A
- VEL-DOM 230-25A
- GUA-VEL 230-16
- ECO-BUR 230-12C
- MDN-VEL 230-5B

2023CA_ModMax_Lluv 6173



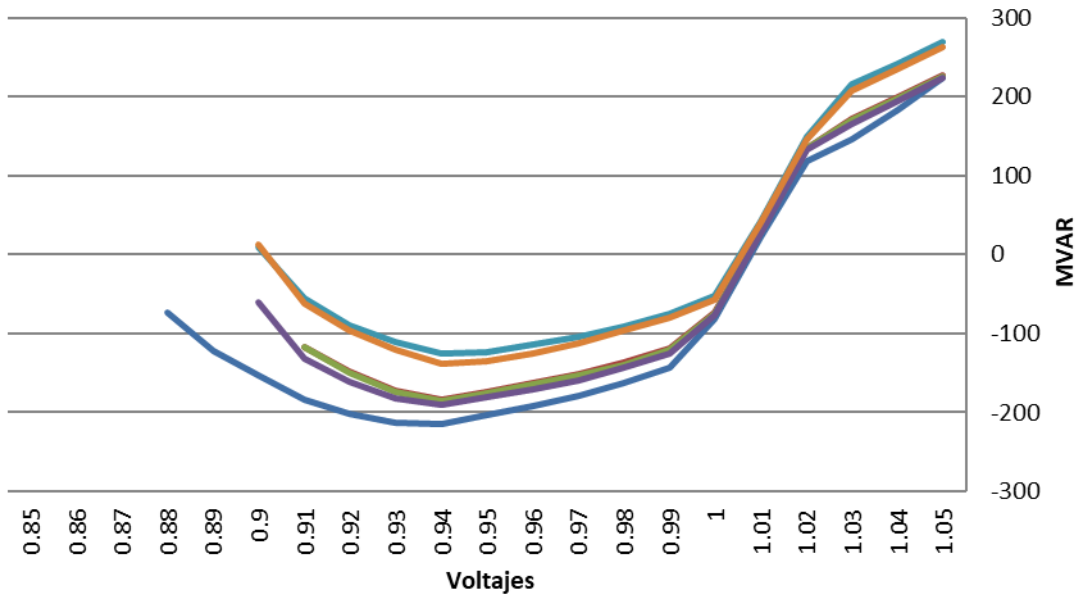
- BASE CASE
- MDN-BOQ3 230-9A
- VEL-DOM 230-25A
- GUA-VEL 230-16
- ECO-BUR 230-12C
- MDN-VEL 230-5B

2024CA_ModMax_Iluv 6001



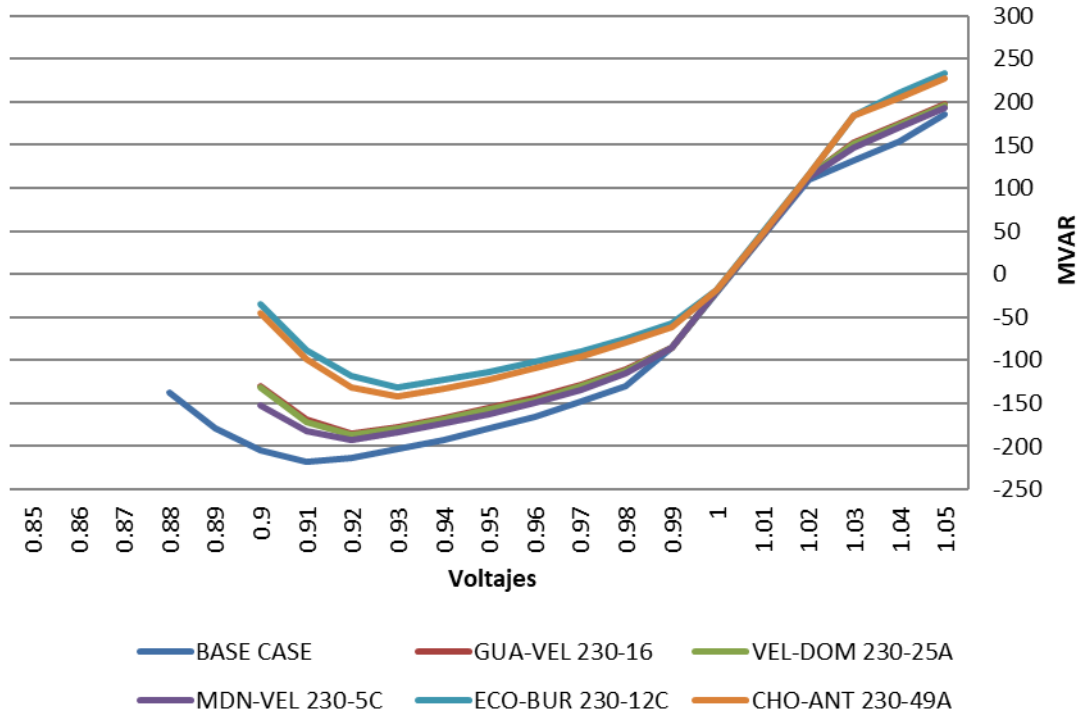
- BASE CASE
- GUA-VEL 230-16
- VEL-DOM 230-25A
- MDN-VEL 230-5C
- ECO-BUR 230-12C
- CHO-ANT 230-49A

2024CA_ModMax_Iluv 6002

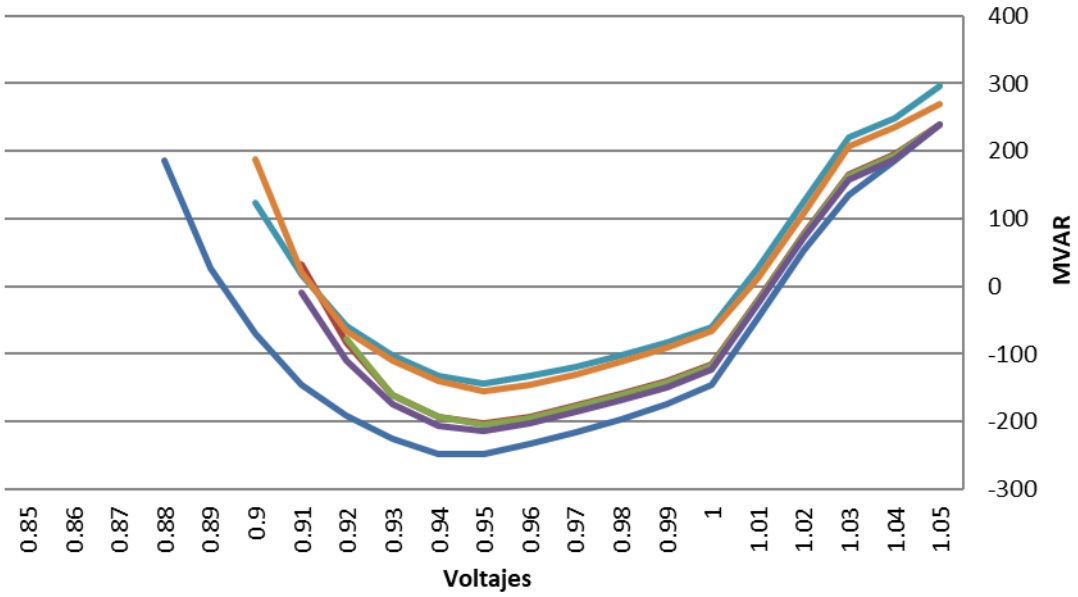


- BASE CASE
- GUA-VEL 230-16
- VEL-DOM 230-25A
- MDN-VEL 230-5C
- ECO-BUR 230-12C
- CHO-ANT 230-49A

2024CA_ModMax_Iluv 6004

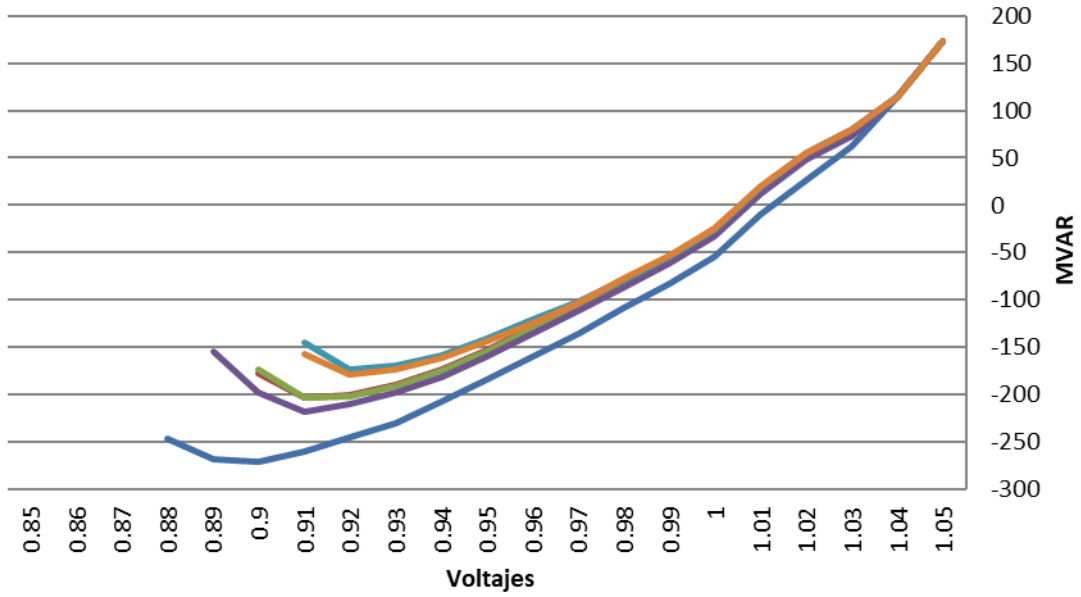


2024CA_ModMax_Iluv 6005



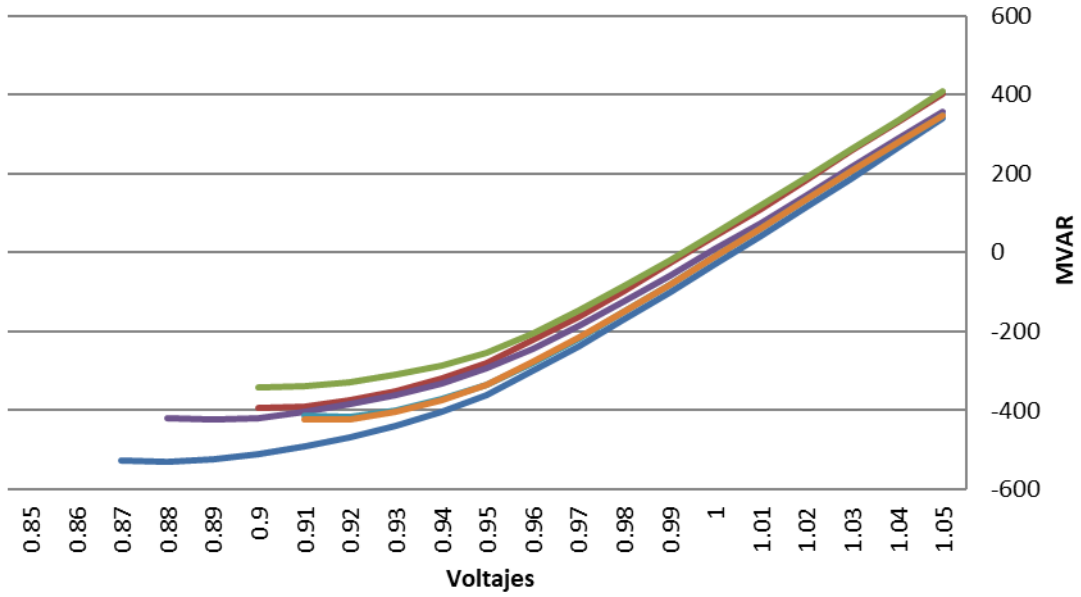
- BASE CASE
- GUA-VEL 230-16
- VEL-DOM 230-25A
- MDN-VEL 230-5C
- ECO-BUR 230-12C
- CHO-ANT 230-49A

2024CA_ModMax_Iluv 6009



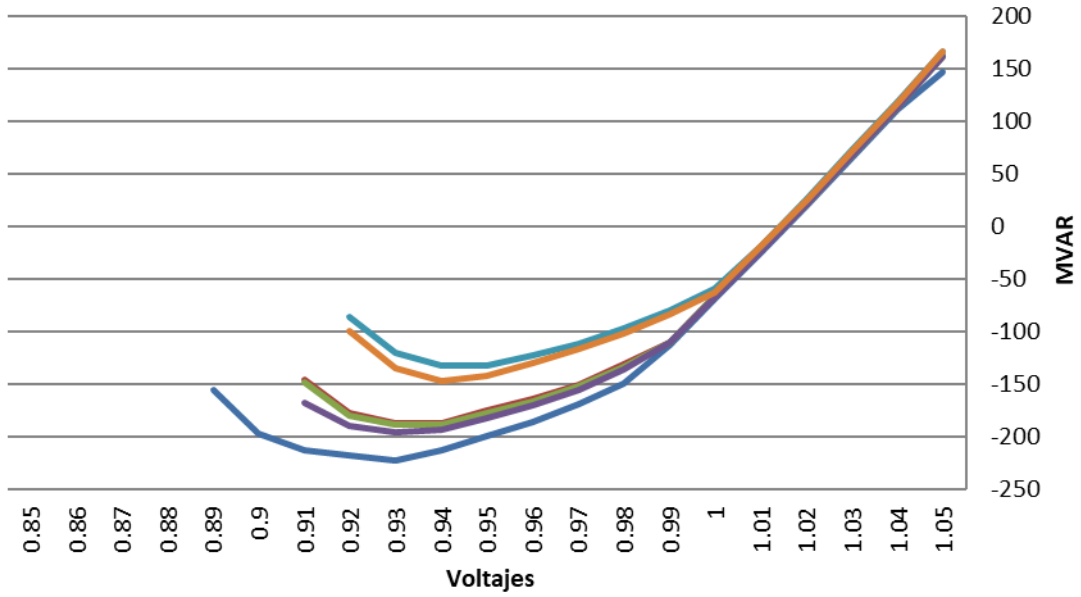
- BASE CASE
- GUA-VEL 230-16
- VEL-DOM 230-25A
- MDN-VEL 230-5C
- ECO-BUR 230-12C
- CHO-ANT 230-49A

2024CA_ModMax_Iluv 6011



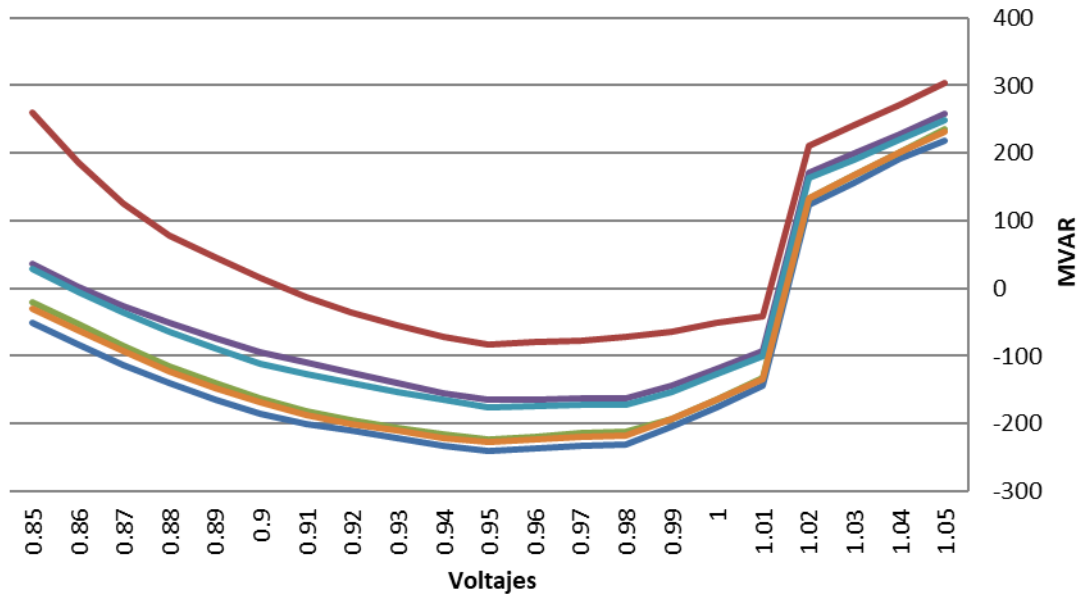
- BASE CASE
- GUA-VEL 230-16
- MDN-VEL 230-5C
- ECO-BUR 230-12C
- VEL-DOM 230-25A
- CHO-ANT 230-49A

2024CA_ModMax_Iluv 6173



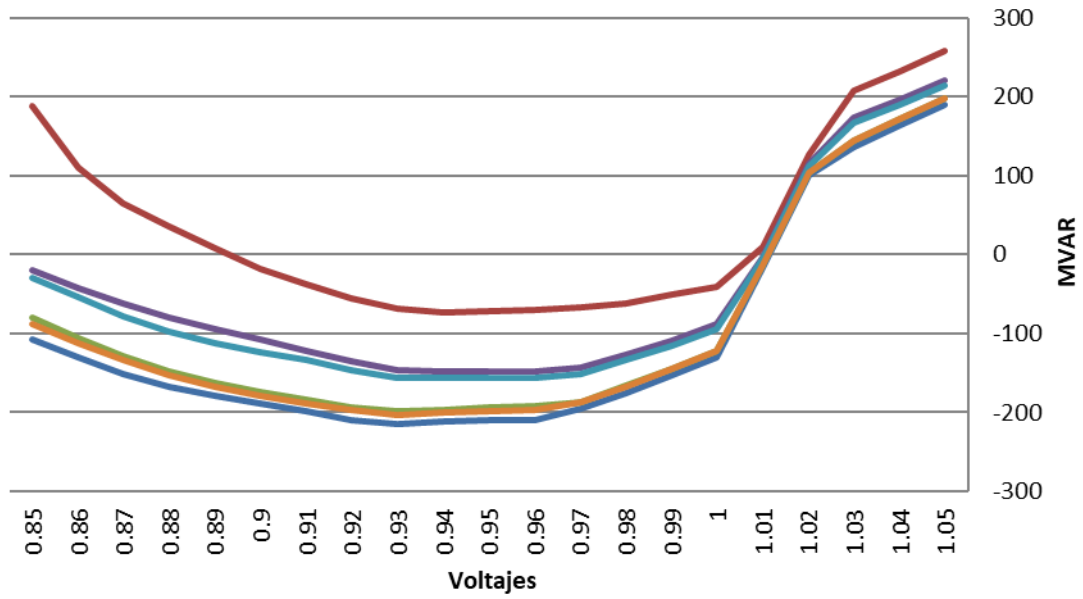
- BASE CASE
- GUA-VEL 230-16
- VEL-DOM 230-25A
- MDN-VEL 230-5C
- ECO-BUR 230-12C
- CHO-ANT 230-49A

2025CA_ModMax_Lluv 6001



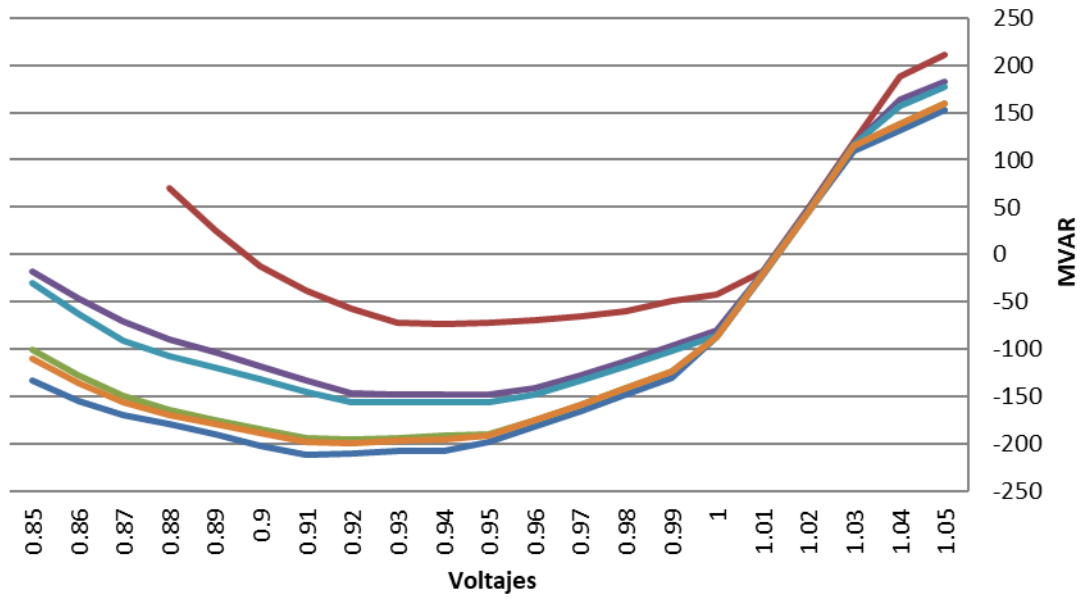
- BASE CASE
- 4LT
- VEL-DOM 230-25A
- ECO-BUR 230-12C
- CHO-ANT 230-49A
- MDN-VEL 230-5D

2025CA_ModMax_Lluv 6002



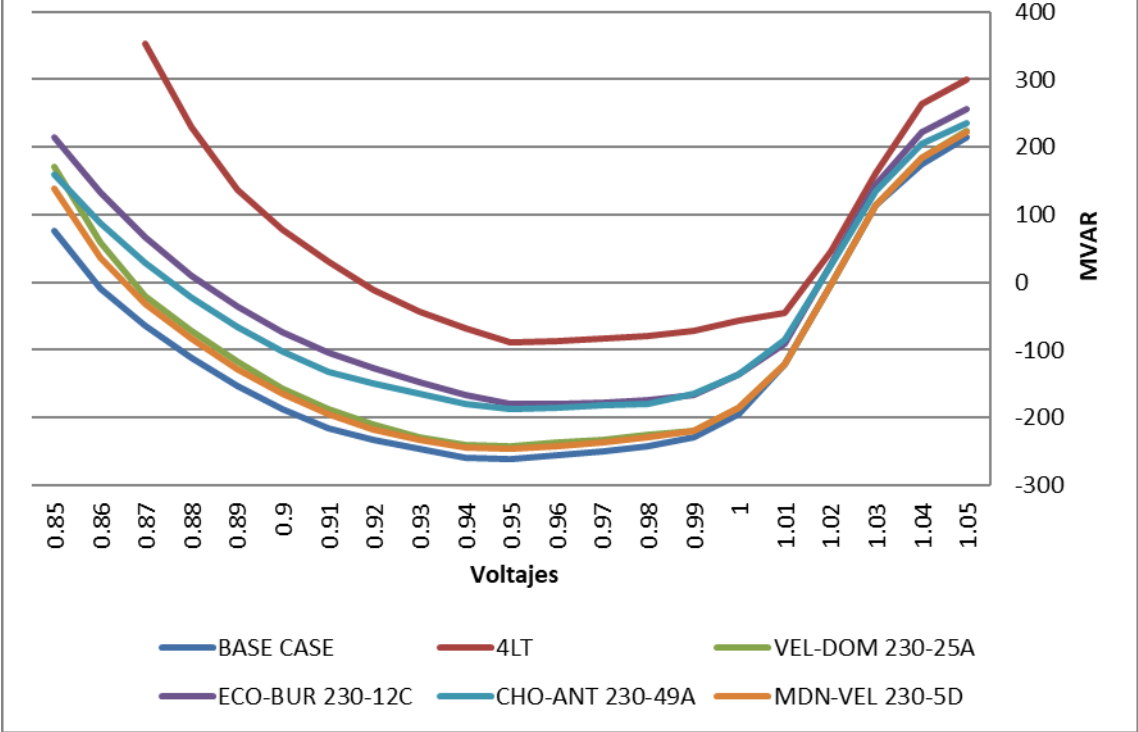
- BASE CASE
- 4LT
- VEL-DOM 230-25A
- ECO-BUR 230-12C
- CHO-ANT 230-49A
- MDN-VEL 230-5D

2025CA_ModMax_Lluv 6004

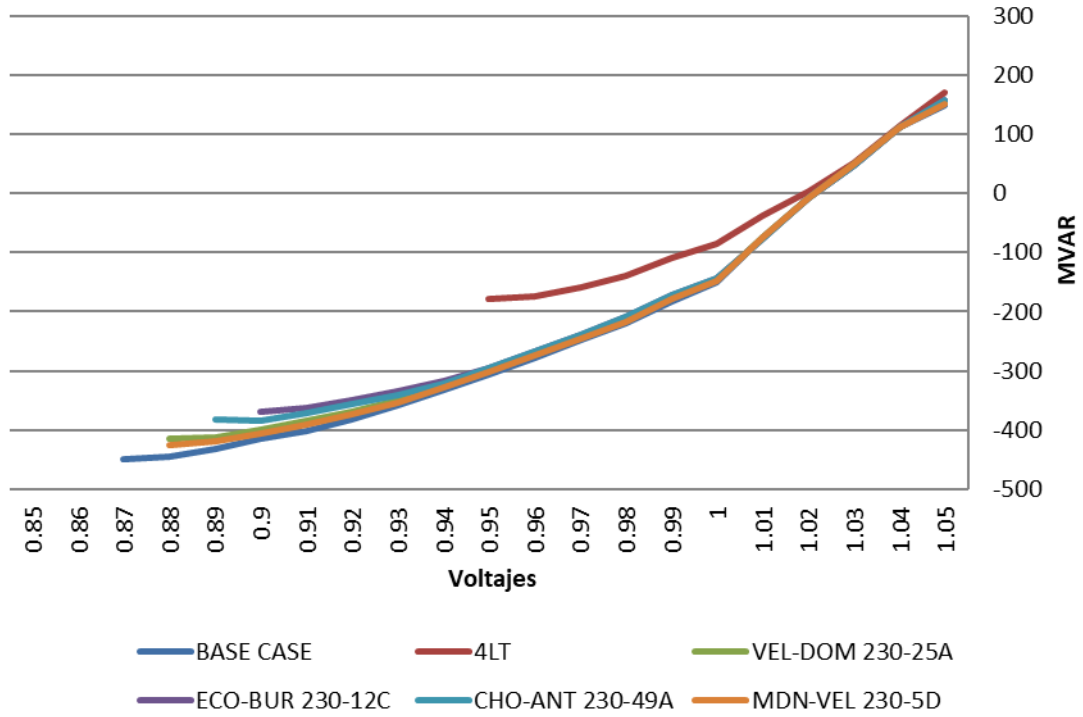


- BASE CASE
- 4LT
- VEL-DOM 230-25A
- ECO-BUR 230-12C
- CHO-ANT 230-49A
- MDN-VEL 230-5D

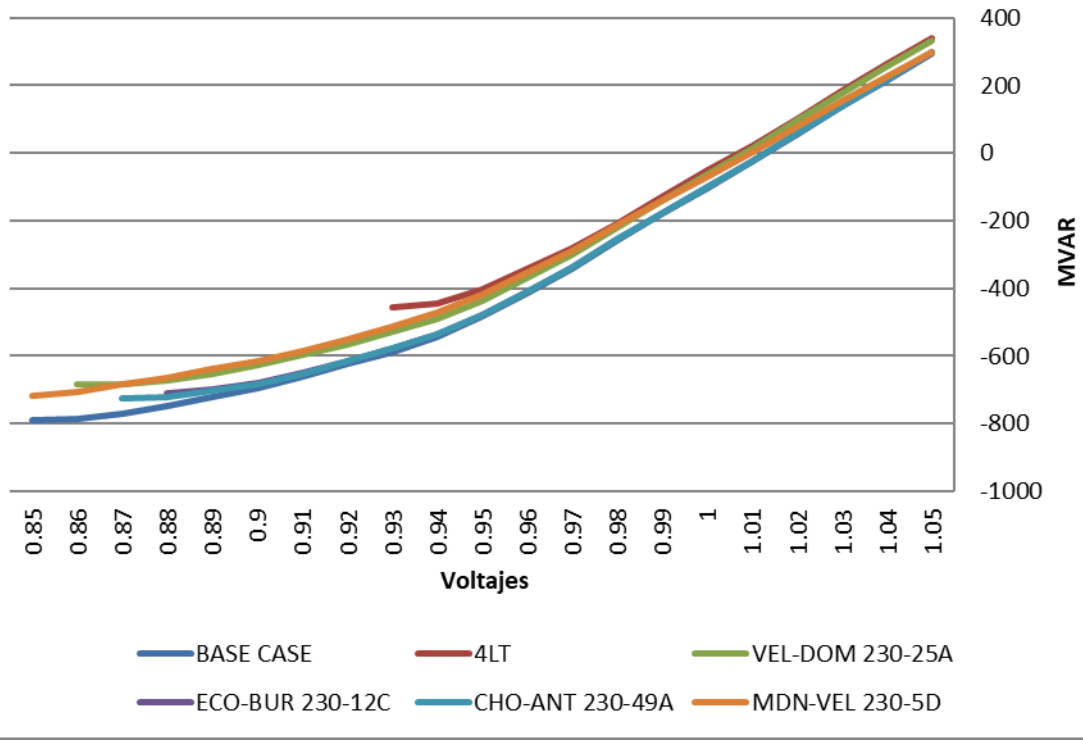
2025CA_ModMax_Lluv 6005



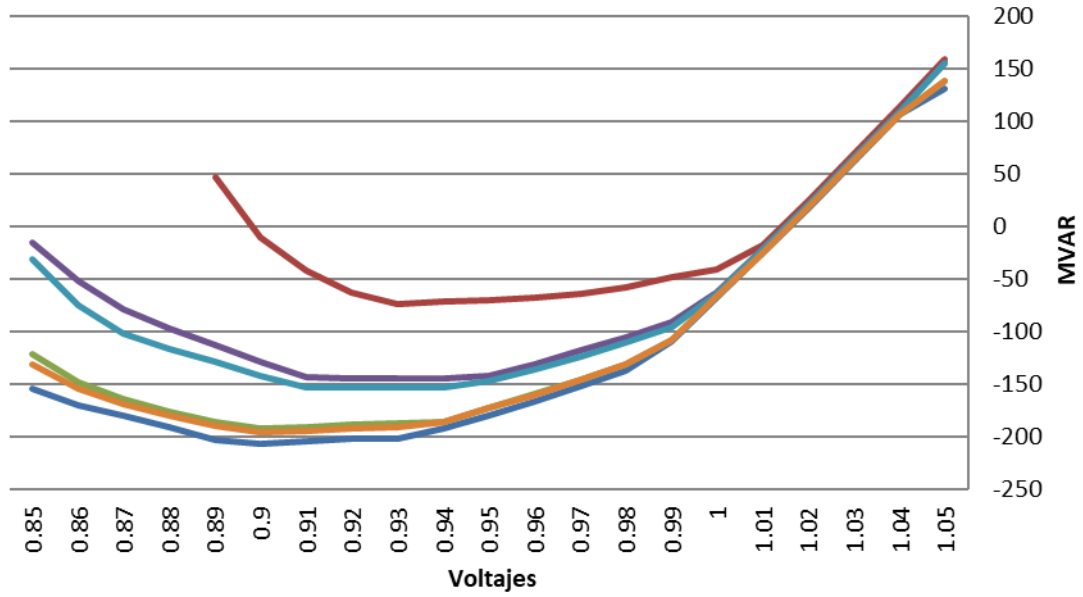
2025CA_ModMax_Lluv 6009



2025CA_ModMax_Lluv 6011



2025CA_ModMax_Lluv 6173



- BASE CASE
- 4LT
- VEL-DOM 230-25A
- ECO-BUR 230-12C
- CHO-ANT 230-49A
- MDN-VEL 230-5D